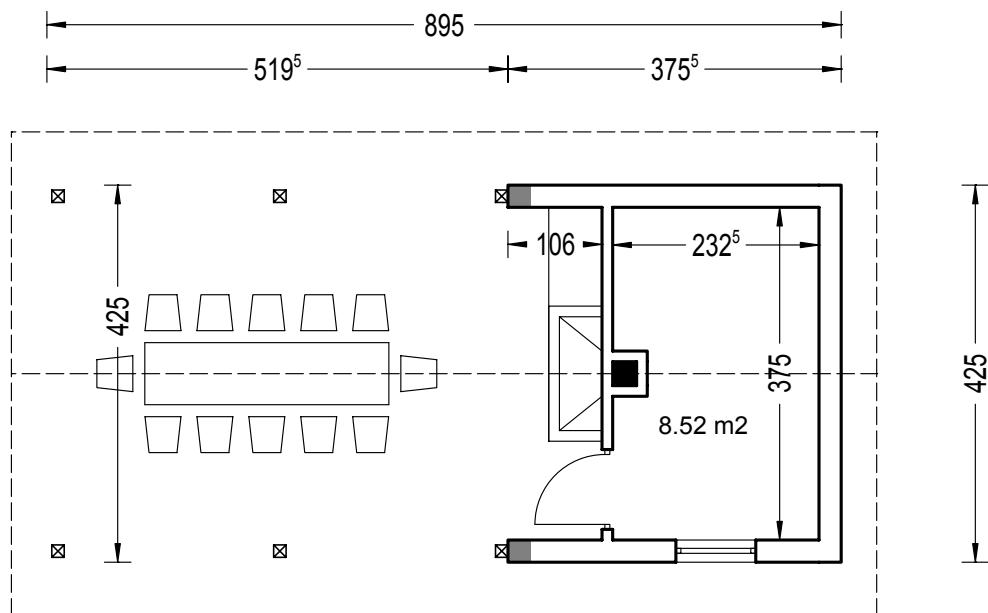


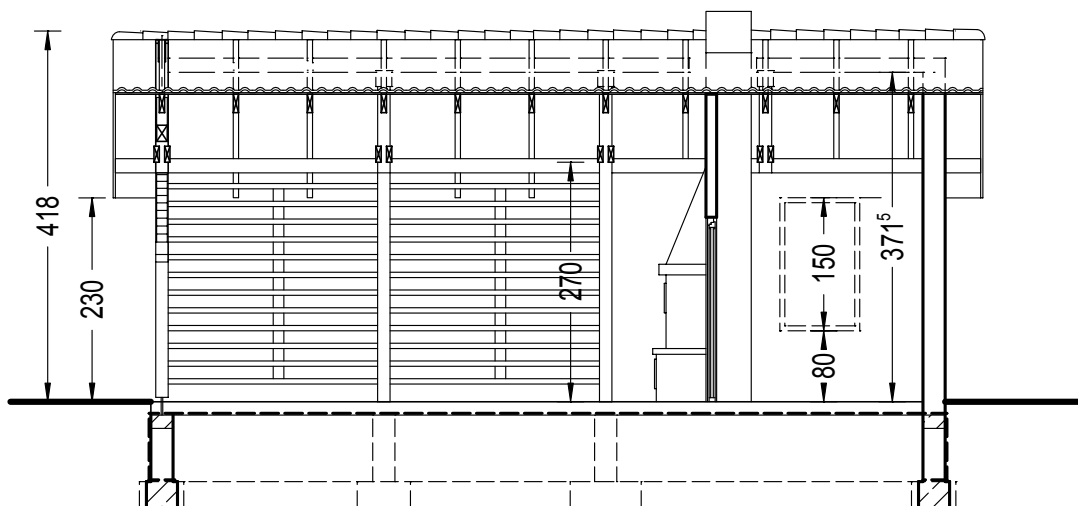
ALTANA A-1

Rzut przyziemia

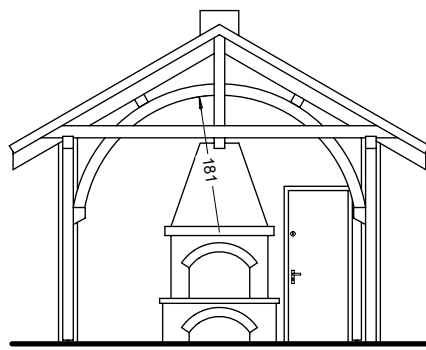


Pow. zabudowy: 11.98 m²
Pow. całkowita: 38.04 m²
Kubatura: 35.95 m³

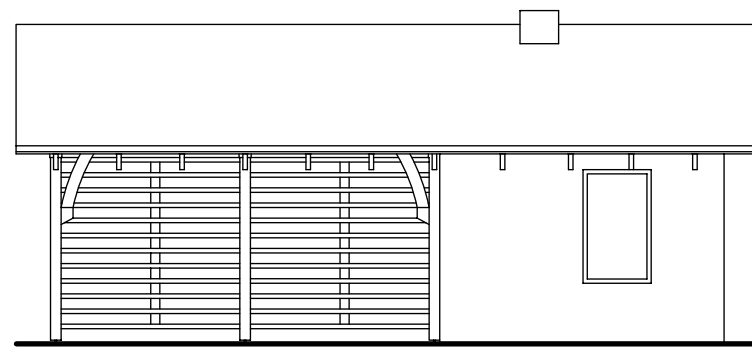
Przekrój pionowy



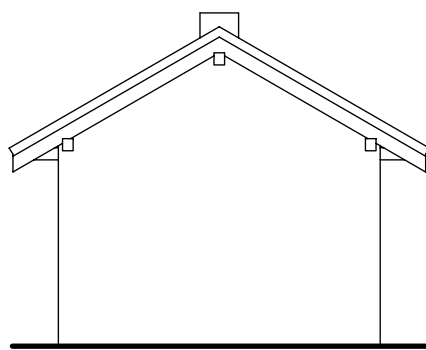
ALTANA A-1



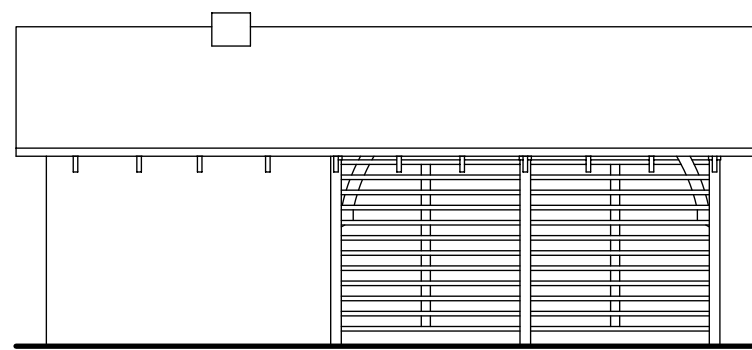
WIDOK OD FRONTU



WIDOK Z PRAWYJ



WIDOK OD TYŁU



WIDOK Z LEWEJ